

Thunder and Webbie – helping VIPs to use computers

Also some useful windows tips to help practically everyone!

Purpose of this document

This document outlines the basic goals in assisting a person with a visual impairment to use Lambeth Library computers. Even a person without their glasses could benefit from some of these features, if not all. The following table shows the windows and key presses which perform the same tasks. The key presses are in the order of which they are pressed. There are alternative key presses to the same goal, the items described are likely to be the most direct.

A brief introduction to Thunder and Webbie


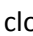

Thunder is screen reading software for Visually Impaired people (VI) to enable them to hear what the computer focus is on and enable best use of the machine; there are various screen readers out there, and Thunder is a free and powerful option. When downloaded from www.screenreader.net, the software also includes an amazing internet suite which centres on a powerful and useful text only web browser called Webbie. Thunder and Webbie are both installed all computers in Lambeth libraries -this software can also be run from a USB stick.

The keyboard is greater than the mouse.

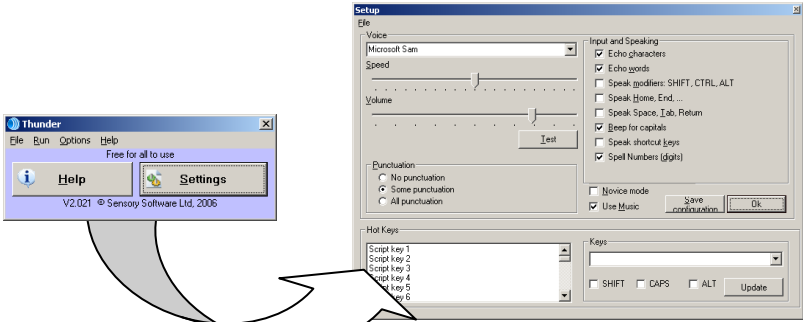
The able-sighted can navigate around windows with a mouse, leaving the keyboard commands to be an afterthought, but the keyboard is quicker to activate commands and move around the system than a mouse. VIPs use the keyboard as they cannot use a mouse, to get information from Thunder as to where they are and what they are doing.

B

Starting Thunder and Webbie

The goal	What to click on	Keys to press
Example : Windows menu opens and closes	Click on the windows button on the bottom left of the desktop. Clicking again will close the window.	1. Windows key  to open 2. Windows key to close 
Activate Thunder	Just double click the desktop shortcut or open Windows menu, then click on All programs submenu and then activate Thunder.	1. Windows key  and d 2. Press t 3. Press enter

Set up volume and speech speed for a Thunder user

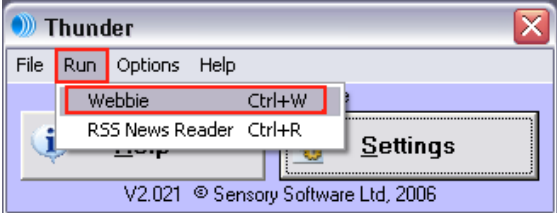


Click on the **settings** button in the Thunder window, which will bring up a new window to adjust the appropriate speech settings. Move the sliders to adjust volume and voice speed, then click on **Ok** to confirm settings.

1. **Alt** and **s** together for settings window
- Press **Tab** key to move around the window:
2. First **Tab** press will focus on the voice used.
3. Second **Tab** press will focus on the speed of the voice. Use the left arrow key to slow the voice down and right arrow key to speed the voice up.
4. Third **Tab** press will focus on the Volume. Adjust with left and right arrow keys.
5. Press **enter** to confirm changes and close window.

Start Webbie once Thunder is started

Click on the **RUN** menu, and then click on the Webbie option.



1. **Ctrl**(Control) and **W** together


Start a Google search with Webbie

Clicking on the **Edit** menu will drop down the menu options. Click on the **Web Search**.



The example above used the

1. **Ctrl**(Control) and **W** together
2. Type in the search term and press **enter**.

	<p>search term 'news' and the Search button pressed. This brought up a list of options to choose from. After one is selected, the Go button is clicked to go to the web site.</p>	
<p>Moving computer focus to the WebblE address bar to type in a web address</p>	<p>Click on the address bar and type the desired address. Press the enter key once you are finished.</p> 	<ol style="list-style-type: none"> 1. Alt key and d together 2. Type the web address 3. Press enter to start the web page loading.

Accessibility Options

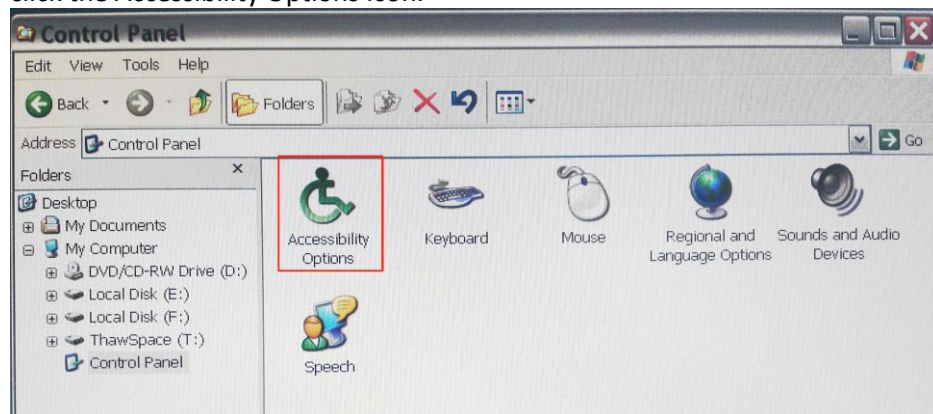
These are built in windows options to:

- Change the system colours to high contrast to enhance visibility
- Make the mouse pointer easier to see
- Make the text cursor easier to see

They are all found in the **Control Panel**.

Open the Accessibility Options to make the computer easier to use.

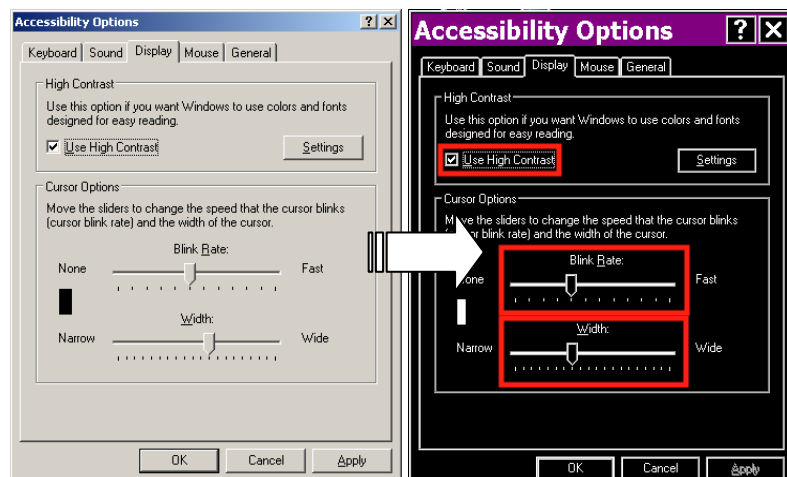
Open the Windows menu chose the control panel. In the new window, double click the Accessibility Options icon.



1. **Windows key**
2. Open the control panel, press **c**
3. Press **tab** once to jump into the control panel
4. Press **a**
5. Press **enter** to open the options.

Change the system colours to make windows and text easier to see.

In the accessibility options, click on the **Display** Tab along the top of the window, and then place a tick in the **Use High Contrast** option. The screen will completely change font size and colours. Different colour schemes can be chosen in the Settings option. The text cursor can also be made wider and to blink more slowly using the sliders below the High Contrast options. Press **OK** to confirm the new settings.



Open the accessibility options as above, then:

1. Press the **right shift** and **tab** key together.
2. Press the **right cursor** key twice, this will move along the tab headings in the window to the **Display** options.
3. Pressing **Alt** and **u** together places a tick in the box to activate.
4. Now press **enter** to confirm the activation, and the screen colours will change to the default white on black with larger fonts.

Notes: Pressing **Alt** and **s** brings up the contrast settings which provide a larger variation of accessible system colours.

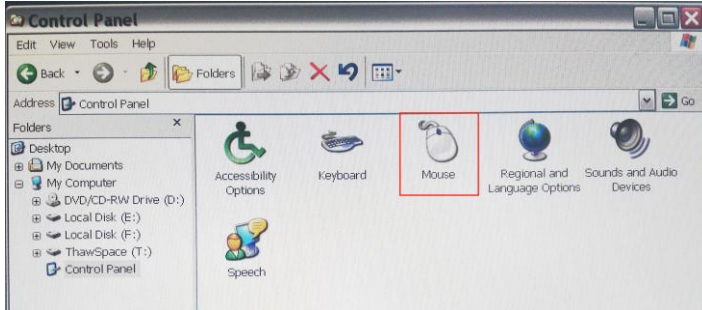
Pressing **Alt** and **r** moves the computer focus to the cursor blink speed; this can be changed with the

There are many different colour schemes, many of which also include large fonts.

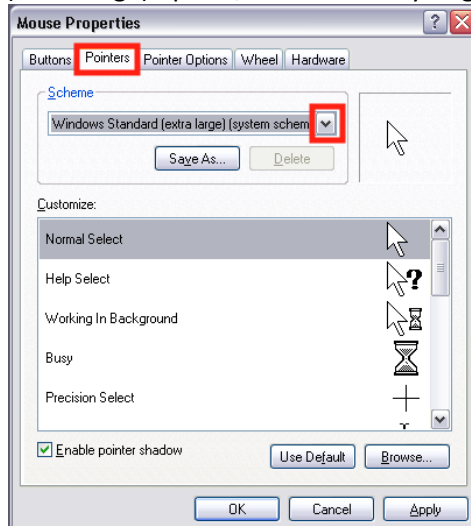
left and right **arrow keys** to make it blink slower or faster. **Alt** and **w** changes the cursor width.

Make the mouse pointer easier to see on the screen.

After opening the **Control Panel**, double click the mouse icon to see the options available.



Mouse size: Choose the Pointers Tab, then drop down the Scheme options and choose a large mouse option. The example shows a Windows Standard (extra large) option, which is a very large mouse pointer.



Mouse speed and making the pointer easier to see. Choose the Pointer Options tab

1. Open the control panel as above.
2. Press **m** to jump to the Mouse icon.
3. Press **enter** to activate the mouse properties window.
4. Pressing the **shift** key and the **tab** will move the computer focus to the Tabs at the top of the window.
5. Pressing the **right arrow** once will move the focus from the Buttons tab to the Pointers Tab.
6. Pressing **Alt** and **s** together will move focus to the Schemes menu, where different mouse sizes and types can be changed.
7. Pressing the **up** and **down** arrow keys will move up and down the menu options.
8. Press the **enter** to confirm the selection in the list

For further accessibility information, go to <http://www.bbc.co.uk/accessibility/>